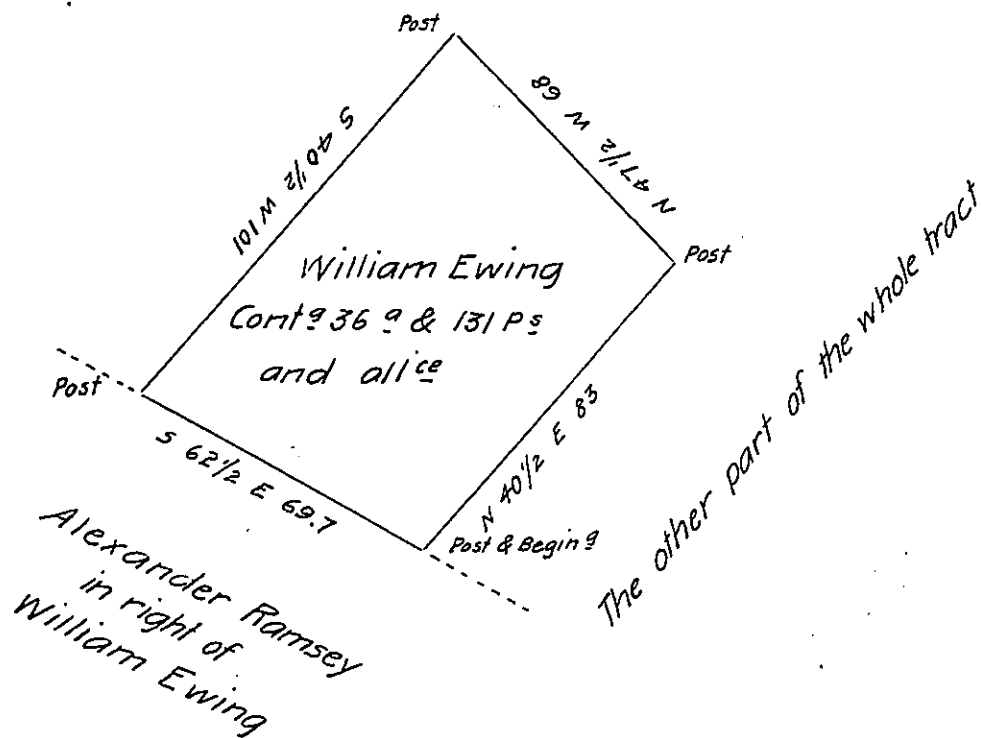


The other part of the whole tract.



Situate in Dover Township in the County of York, Containing as above set forth 36 a & 13 1/2 Perches and allowance of six per cent &c. Being part of a larger tract of 234 a 1/2 and allowance &c. Originally surveyed by George Stevenson late D.S. on the 24th day of April 1758 in pursuance of a warrant bearing date the 14th day of March Anno Domini 1755. Resurveyed and divided off from the said larger tract of land on the 20th of December 1780 for Martha Ramsey agreeably to the last will and testament of her father Thomas Ramsey. And now at the request of the owner Samuel Parks the above has been calculated examined &c & returned for confirmation the 29th day of December A.D. 1810.

Per

Jacob Spangler D.S.

To Andrew Porter Esq.

Surveyor General

Lancaster Pa

IN TESTIMONY that the above is a copy of the original remaining on file in the Department of Internal Affairs of Pennsylvania, made conformably to an Act of Assembly approved the 16th day of February, 1833, I have hereunto set my Hand and caused the Seal of said Department to be affixed at Harrisburg, this thirteenth day of August 1904

Isaac B. Benson
 Secretary of Internal Affairs.